

1 Rules

The regatta will be governed by the rules as defined in The Racing Rules of Sailing.

2 Entries

- 2.1 Eligible yachts may be entered by completing registration with the organizing authority. There will be Four classes: PHRF spinnaker, PHRF non-spinnaker, PHRF Racer/Cruiser, and PHRF Cruising. Depending on number of entries, these four classes may be divided into two or more divisions. Class divisions shall be solely the responsibility of the Race Committee and their decision shall be final.
- 2.2 All yachts may use any sails legal under the rules of West Florida PHRF. Whisker poles shall be subject to the constraints of the rules of West Florida PHRF. A skipper in Cruiser Class must declare his intent to use his cruising chute rating no later than 1700, Wednesday, April 6, 2016.
- 2.3 Unless approved in writing by the Race Officer, a yacht shall carry the same number on the mainsail, spinnaker and overlapping headsails having a luff perpendicular exceeding 130% of the foretriangle. In the event of there being entries with duplicate sail numbers, a letter will be assigned and shall be affixed by the Skipper ahead of the existing sail number on both sides of all sails defined above.

3 Notices to Competitors

Announcements, notices and race results will be posted on the official notice board(s) located:

- 4/7..... SPYC@PAG
- 4/8 am SPYC@PAG
- 4/8 pm-4/9 am..... BYC Poolside
- 4/9 pm-4/10 am..... SPYC Dockside

4 Changes in Sailing Instructions

Any change in the sailing instructions will be posted before 0800 on the day it will take effect, except that any change in the schedule of races will be posted by 1900 on the day before it will take effect.

5 Signals Made Ashore

- 5.1 Signals made ashore will be displayed on the flagpole of the appropriate yacht club.
- 5.2 Code flag 'AP' with two sounds (one sound when lowered) means 'The race is postponed. The warning signal will be made not less than 60 minutes after 'AP' is lowered'. Generally such postponement will be made prior to or at 0800.
- 5.3 All signals made ashore will be announced over VHF channel 63 immediately after display.

6 Schedule of Events

- 6.1 A representative of each yacht whose entry has been accepted will register on Thursday, April 7, between 1700 & 1900 at SPYC@PAG and receive his 'Skipper's Packet' containing scratch sheets and order of starts.
- 6.2 Skipper's meeting will at SPYC@PAG at 1900, April 7, 2016.
- 6.4 Races are scheduled as follows:

Race	Date .	Time of 1 st Warning Signal
#1, Friday	Pass-a-Grille to Bradenton	April 81000
#2, Saturday ..	Bradenton to St. Petersburg	April 91000
#3, Sun.	Racing off St. Petersburg	April 101000
Awards Party	DIYC West Porch-2 nd Deck	April 151800

7 Class Flags

- Yellow PHRF Spinnaker
- Code Flag 'R' ... PHRF Racer/Cruiser
- Purple PHRF Non-Spinnaker & PHRF Cruising

8 Racing Area

The racing area is the Gulf of Mexico and Tampa Bay. The starting areas will be:

- Friday the entrance to Pass-a-Grille
- Saturday Manatee River #2
- Sunday..... near G "3" Fl G 4s ESE of the St. Petersburg Pier

9 Marks & Courses

See Attachment A for Marks and Courses for Friday & Saturday. Attachments B & C for Sunday.

On Friday & Saturday, the courses sailed will be point-to-point using government and private fixed marks as shown on the latest edition of NOAA charts #11416 & #11415. On Sunday, the course sailed will be a closed course using fixed marks.

10 The Tampa Ship Channel

The Tampa Ship Channel is a major, high-traffic, shipping lane. No participant of this event is to impede the progress of any vessel restricted to this channel or any other channel in the sailing waters. If the Race Committee receives a report that any such vessel has been impeded by any competitor in this event, they may call a hearing to ascertain the facts and issue such penalty as is appropriate, including but not limited to, a time penalty or disqualification. This modifies RRS 60.2.

11 The Start

- 11.1 Races will be started in accordance with RRS 26 in the following:
 - YellowPHRF Spinnaker
 - Code Flag 'R' ...PHRF Racer/Cruiser
 - Purple.....PHRF Non-Spinnaker & PHRF Cruising
- 11.2 On Sunday, a white board will be displayed with the warning signal to indicate which course to sail (Attachments B & C).
- 11.3 On Friday and Saturday, should the wind conditions necessitate a postponement prior to the start, the R/C may move the starting area farther up the course by displaying code flag "L" and motoring towards the next mark. In this case, the starting mark will be either a mark of the course, a nearby government aid, or an inflatable buoy. Should the R/C pass a mark of the course, that mark is then eliminated from the course.
- 11.4 The starting line will be between a staff displaying an orange flag on the race committee boat and the starting mark.
- 11.5 Yachts whose preparatory signal has not been made shall keep clear of the starting area and of all yachts whose preparatory signal has been made.
- 11.6 The starting area is defined as an area extending ½ the length of the starting line behind it, in front of it, and at both ends.
- 11.7 Clearance marks may be set off the stern of the race committee boat. Yachts shall neither touch nor pass between those marks and the race committee boat.

12 Recalls

Individual recalls will be signaled in accordance with RRS

- 29.1. The Race Committee will endeavor to announce recalls

on VHF Channel 63 but failure to make or receive such transmission shall not be grounds for redress. A premature starter who fails to return shall have 30 minutes added to her finish time. This modifies RRS A4.2.

13 Change of Course after the Start

Except for shortening the course, there will be no change of course after the start.

14 The Finish

- 14.1 The finishing line will be between a staff displaying an orange flag on a race committee boat and the finishing mark.
- 14.2 If the Race Committee is not on station, the US Sailing Prescription to RRS 34 shall apply. Skippers taking their own time shall deliver a signed note of their finishing time to the Race Committee immediately upon docking. Such finishing times will be posted as soon as possible. Such posting will constitute the beginning of the time limit allowed for redress under RRS 62.2 for that boat.

15 Alternative Penalties

Only the scoring penalty, RRS 44.3, will apply.

16 Protests

- 16.1 A yacht intending to protest SHALL REPORT IMMEDIATELY AFTER FINISHING TO A MEMBER OF THE RACE COMMITTEE on the far side of the committee boat from the finish line, clearly identifying the infringing yacht and await acknowledgment. This changes RRS 61.
- 16.2 A yacht acknowledging an infringement and having complied with RRS 44.3, shall report in the same manner as in 16.1 above clearly identifying the yacht infringed against and await acknowledgment.
- 16.3 Protests shall be written on forms available from the Race Committee and lodged with the Race Committee at the committee boat within one hour after the time of the docking of the Race Committee boat; except on Sunday the protest may be filed on the water within one hour of the protesting boat's finish.
- 16.4 On Friday and Saturday all protests filed will be posted on the Official Notice Board within one-half hour of the protest deadline. On Sunday, the parties to the protest will be notified via email or telephone.
- 16.5 *We will attempt to hear protests filed on Friday and Saturday right after the protest time limit. All unresolved protests & protests filed on Sunday will be heard on*

Tuesday, April 12, 2016 starting at 1900 in the Regatta Room on the first deck of Davis Island Yacht Club.

- 16.6 The schedule of protest hearings to be heard on Tuesday night will be posted on the event website, <http://henrymoore.org/scrw>, by 2300 Sunday, 4/10.

17 Scoring

- 17.1 The low point scoring system, Appendix A of the racing rules, will apply, with three races scheduled for all classes, except that each yacht's total score will be the sum of her scores for all races. One race shall be completed to constitute a series.
- 17.2 Corrected times will be calculated by the PHRF time-on-distance method.

18 Haul-out Restrictions

After her starting signal on the first day of racing, no yacht shall be hauled out of the water without the written permission of the Race Officer or the Regatta Chairman.

19 Prizes

- 19.1 Prizes will be awarded to the top three finishers in each division.
- 19.2 The Bonanni Trophy shall be awarded to the overall winner of the PHRF Spinnaker Class.

20 Retiring Yachts

Retiring yachts are requested to inform the Race Committee as soon as possible. VHF Channel 63 will always be available for such communications.

21 Courtesy Announcements

Courtesy announcements of such things as postponements, premature starters, protest deadlines, and other signal displays and notice postings may be announced over VHF channel 63. Such announcements will be strictly a courtesy and used as a means to call attention to the proper notice or display. The failure or inability to receive or the failure to transmit such announcements shall not be grounds for redress.

22 Disclaimer Of Liability

Competitors participate in the regatta entirely at their own risk. See rule 4, Decision to Race. The organizing authority will not accept any liability for material damage or personal injury or death sustained in conjunction with or prior to, during, or after the regatta.

Attachment A - Marks & Courses - Friday & Saturday

Mark	Chart Description	Location or Description	
“70”	Fl R 4s 16 ft 5M “70”	Midbay marker north of Manatee River	1.1.5 E to “70” leave to STARBOARD
Big J	Iso 6s 64ft Fl 4s 23ft 5M	Back marker Cut “J” Range Tampa Bay	1.1.6 SE to the FINISH between the R/C boat and Manatee 2
CLFront	Q R 27ft	Front Marker, Cut C Lower Range	1.2 Non-spinnaker & Cruiser classes (Approx. 18.6 nm)
Egmont #9	G “9” Fl G 4s	Egmont Channel, buoy #9	1.2.1 START between the R/C boat and PAG
Egmont #11	G “11” Fl G 8s	Egmont Channel, buoy #11	1.2.2 SW to Egmont #11 leave to PORT
G3	G “3” Fl G 4s	Buoy SE of St. Pete Pier	1.2.3 SE to SW 1 leave to PORT
Manatee 2	Fl R 2.5s 16ft 3M “2”	Entrance Manatee River	1.2.4 NE to SW 3 leave to STARBOARD
PAG	Mo (A) 16ft 5M “PG”	Entrance Pass a Grille Channel	1.2.5 SE to the FINISH between the R/C boat and Manatee 2
Skyway	Sunshine Skyway Center <u>Three</u> Spans		2 Saturday, April 9, 2016, Race #2, the Manatee River to St Petersburg
SW 1	G “1” Fl G 2.5s Bell	Southwest Channel buoy #1 southwest of Egmont Key	2.1 Spinnaker & Racer/cruiser classes (Approx. 20.4 nm)
SW 3	G “3” Q G BELL	Southwest Channel buoy #3 east south end Egmont Key	2.1.1 START between the R/C boat and MANATEE 2
1 Friday, April 8, 2016, Race #1, Pass-a-Grille to the Manatee River			2.1.2 NW to SW 3 leave to STARBOARD
1.1 Spinnaker & Racer/cruiser classes (Approx. 21.1 nm)			2.1.3 ENE to the Skyway through one of the Center Three Spans
1.1.1	START between the R/C boat and PAG		2.1.4 NE to CLFront leave to PORT
1.1.2	SW to Egmont #9 leave to PORT		2.1.5 NNE to Big J pass leaving to PORT
1.1.3	SE to SW 1 leave to PORT		2.1.6 WNW to the FINISH between the R/C boat and G3
1.1.4	NE to SW 3 leave to STARBOARD		2.2 Non-spinnaker & Cruiser classes (Approx. 16.5 nm)
			2.2.1 START between the R/C boat and MANATEE 2
			2.2.2 N to “70” leave to STARBOARD
			2.2.3 NE to the Skyway through one of the Center Three Spans
			2.2.4 NE to CLFront leave to PORT
			2.2.5 NNE to Big J pass leaving to PORT
			2.2.6 WNW to the FINISH between the R/C boat and G3

Attachment B - Marks & Courses - Sunday

The Finish line and finish mark will be in the vicinity of Marks “D/E”.

All mark positions and distances are approximate. See latest NOAA chart for exact locations.

MARKS

Mark “D”	G “3” Fl G 4s	1 mile ESE of the St. Pete Pier	27 46.0N	82 36.5W
Mark “E”	G “1” Q G	1.2 miles ENE of the St. Pete Pier	27 46.8N	82 36.1W
Mark “F”	Q 18 ft Q 5M	Front Range Cut J Channel	27 45.9N	82 34.3W
Mark “J”	G “3G” Fl G 2.5s	#3 Cut G Channel	27 47.1N	82 32.5W
Mark “K”	Iso 6s 52ft Fl 4s 20ft 5M	Back Range Cut E Channel	27 46.3N	82 31.0W
Mark “P”	Iso 6s 64 ft Fl 4s 23ft 5M	Back Range Cut J Channel	27 45.0N	82 34.3W
Mark “R”	Fl R 4s 16ft 5M”10”	#10 Pinellas Channel	27 43.9N	82 36.6W
Mark “T”	Q 25 ft	Front Upper Range Cut B Channel	27 41.3N	82 34.7W
Mark “U”	QR 27 ft	Front Lower Range Cut C Channel	27 40.2N	82 36.3W

Course Marks To Be Rounded	Side To Be Rounded On	Approx. Distance
#1 Start-J-E-P-Finish	Port Except: P Round To Starboard	10.2nm
#2 Start-K-E-P-Finishes	Port Except: P Round To Starboard	12.4nm
#3 Start-F-K-E-P-Finishes	Port Except: P Round To Starboard	11.9nm
#4 Start-F-K-E-P-K-Finish	Port	17.2nm
#5 Start-F-K-E-T-P-Finish	Port	21.4nm
#6 Start-F-J-E-T-Finish	Port	15.3nm
#7 Start-F-K-T-R-Finish	Stdb	14.5nm
#8 Start-F-K-R-Finish	Stdb	10.9nm
#9 Start-F-T-Finish	Stdb	11.4nm
#10 Start-F-T-U-Finish	Stdb	14.1nm
#11 Start-K-T-U-Finish	Stdb	15.9nm
#12 Start-F-P-T-U-D-F-Finish	Stdb	18.5nm
#13 Start-F-P-T-U-D-F-D-F-Finish	Stdb	21.9nm
#14 Start-K-T-U-D-F-Finish	Stdb	22.5nm
#15 Start-F-P-T-U-R-P-R-Finish	Stdb	18.8nm
#16 Start-K-T-U-R-P-R-Finish	Stdb	23.2nm

Attachment C

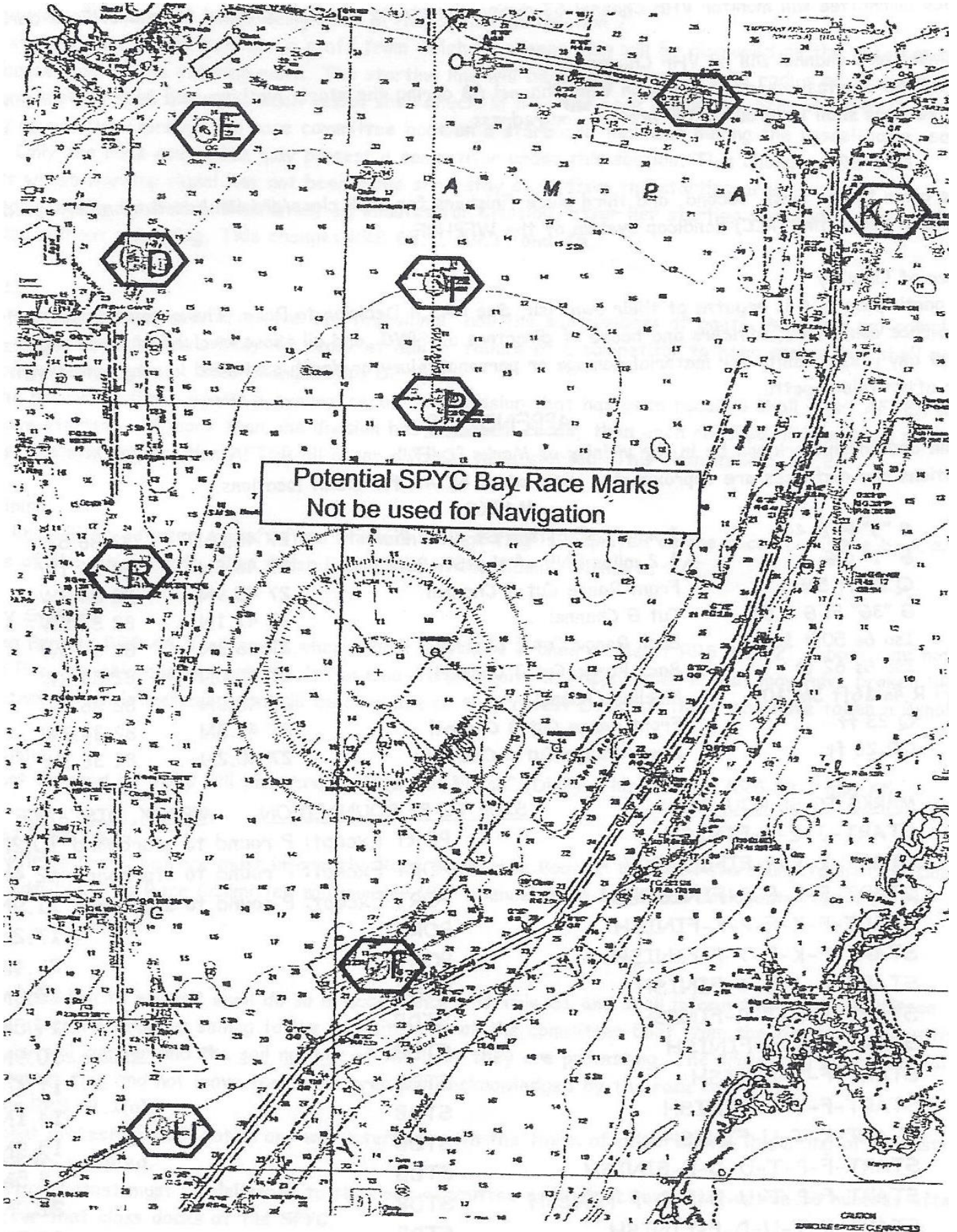


Diagram is not to be used for Navigation